

DISRUPTIVE BEHAVIOR

To ensure a pleasant and productive environment for all library users, users are expected to:

- Set phones and other electronic devices to silent/vibrate mode
- Follow posted signs regarding area noise levels
- Refrain from excessive noise or disruptive behavior

The following are examples of disruptive behavior:

- Obstructing access to study areas, workstations, or library materials
- Vandalizing, defacing, damaging, or destroying library property
- Distributing, marketing, and/or selling of items or services
- Occupying multiple workspaces
- Any other behavior that interferes with others' ability to use or enjoy the Library

FILMING AND PHOTOGRAPHY

We know our buildings are awesome and you want to snap some pics.

Incidental, personal, or course-specific filming and photography is permitted in Library facilities, with these guidelines:

- Maintain complete and full access to all collections and resources in the area (including sidewalks)
- Be alert and responsive to those who need access to collections, equipment, or services
- Obtain consent from any individual captured in photographs or video, including Library employees

Visit our website for more details on guidelines and requesting permission to film.

MINORS (UNDER AGE 16)

Students at the Preuss School with their student IDs are welcome to use the Library. All other individuals under the age of 16 must be accompanied and supervised by an adult guardian at all times.

SERVICE ANIMALS

In accordance with the Americans with Disabilities Act (ADA), trained service animals are welcomed and permitted in all UC San Diego Library facilities. No other animals are permitted, except for those working at Library-sponsored events.

SMOKING, TOBACCO, AND E-CIGARETTES

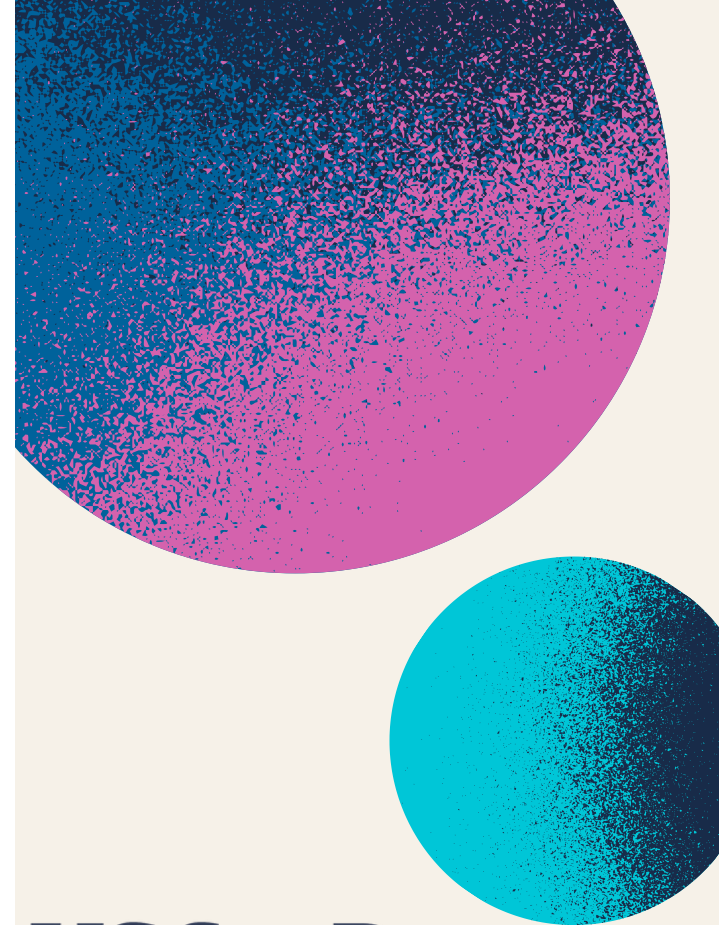
Smoking, e-cigarettes, and vaping devices may trigger a fire alarm and are strictly prohibited. UC San Diego is a smoke-free and tobacco-free campus. Tampering with fire systems is a crime. Visit www.smokefree.ucsd.edu for more resources.

ENFORCEMENT AND REPORTING

Library policies are applicable to all users, and enforceable by all Library employees.

Anyone unable to meet these expectations for behavior may be asked to leave the Library and denied future access. Violations can lead to warnings, suspension, legal action, fines, or other penalties.

Library users are encouraged to report any individual or group not adhering to these policies. Call or text Library Security at **(858) 282-3602** or contact any Library employee to report any concerns, problems, or policy violations.



UC San Diego

LIBRARY

LIBRARY POLICIES

UC San Diego Library is dedicated to providing a welcoming, comfortable, safe, and civil environment for library users, visitors, and university employees. Users are expected to be guided by courtesy, sensitivity, and respect for others, as well as the UC San Diego Principles of Community, when using Library spaces and resources.

The following Library policies are intended to promote a pleasant and productive community space for all Library users.

ACCESS AND USE OF LIBRARY BUILDINGS AND FACILITIES

UC San Diego Library welcomes users and visitors into our public spaces during posted hours. Users are expected to:

- Maintain possession of all personal property
- Follow all posted signs
- Vacate Library premises by posted closing times and at the direction of Library staff, including during evacuations
- Wear appropriate footwear

Additionally, the Library may not be used as living quarters.

COLLECTION ACCESS AND USE

UC San Diego Library is committed to making resources accessible to all users. Users are expected to:

- Check out or obtain proper authorization before removing or relocating materials, equipment, or property from Library facilities
- Handle library materials with care to avoid damage or loss
- Return library materials on or before the due date or upon request by the Library, to maximize access
- Abide by all relevant copyright laws, license agreements, and restrictions and guidelines on use of electronic resources

COLLECTION DEVELOPMENT

UC San Diego Library strives to develop a collection of information resources to benefit the UC San Diego community in direct support of the university's curricular and research needs. To learn more about Collection Development, visit our website.

COMPUTER USE

UC San Diego Library provides computer access in support of the research and educational needs of the community.

Acceptable use of computers includes:

- Accessing the Library's online catalog, databases, e-books, and journals
- That which aligns with the UC San Diego Principles of Community

Unacceptable use of computers includes, but is not limited to:

- Maliciously accessing, altering, damaging, or destroying any computer system, network, program, or data
- Violating state or federal laws or university policies
- Violating copyright, license agreements, or restrictions and guidelines on the use of electronic resources

UC San Diego Library supports open access to the internet, though employees may ask a library user to vacate public computing after 30 minutes if others are waiting.

MICROMOBILITY

Micromobility devices such as scooters and skateboards may not be operated where posted outside the Library and inside Library buildings, as described in the UC San Diego Micromobility Device Policy.

Users are expected to secure micromobility devices in designated outdoor storage areas or carry and stow them so as to prevent obstacles for other users or obstruction of walkways or collection access.

Foldable bikes are permitted when carried as personal property. All other bicycles must be parked outside the buildings.

FOOD AND DRINK

UC San Diego Library allows food and non-alcoholic beverages in both Geisel and WongAvery Library buildings, except where otherwise posted. Policy guidelines allow users to enjoy an occasional snack or beverage while protecting Library facilities, materials, and equipment, as well as maintaining a clean, welcoming environment for all users.

- Food: Sturdy, sealable containers are preferred
- Beverages: Spill-proof containers with lids are preferred
- Clean up: Leave areas clean of any food or drink items. Trash and recycling bins are available throughout Library buildings
- Delivery: Food delivery to the Library is discouraged. Please arrange to pick up any deliveries outside the Library
- Equipment: Cooking or heating foods and beverages in public spaces poses a fire hazard and is not permitted. Microwaves are available at other campus community spaces

Accidents happen! Alert Library staff to any spills as soon as possible.

The Library reserves the right to ask anyone to relocate, remove, or dispose of food and drink.

Thank you for your cooperation and support.

